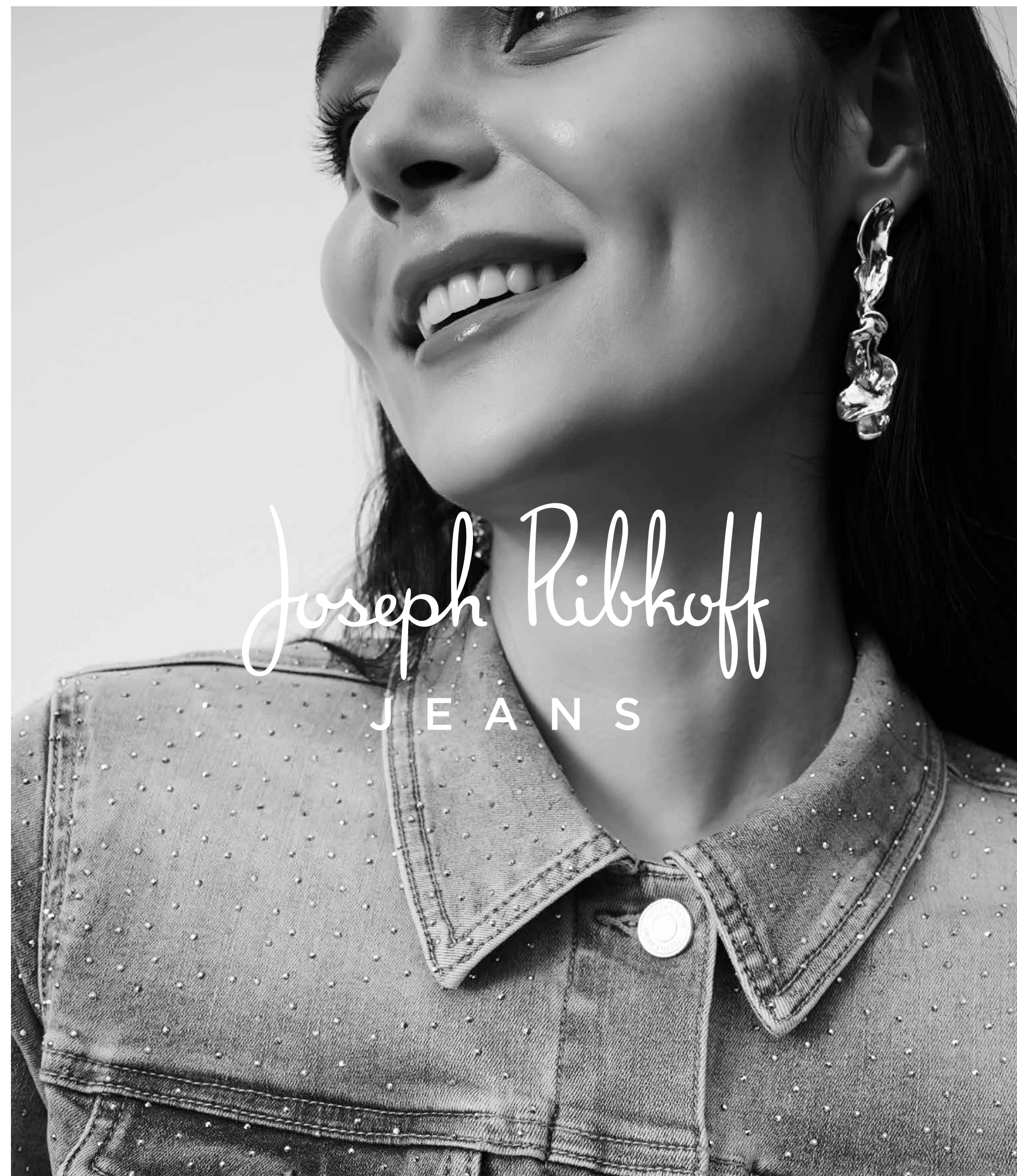


THE
DENIM
FIT
GUIDE

COLLECTION 251





Rediscover denim through Joseph Ribkoff Jeans' stylish repertoire, blending fashion-forward design with unparalleled comfort. Crafted to pair flawlessly with relaxed tees and structured blazers alike, these versatile bottoms and complementary over-pieces promise to be a staple for effortless style in any setting.

From the enduring appeal of our classic straight cuts to the graceful flow of bootcut and wide-leg designs, every silhouette fits just right. A pair of slim-cropped denim will have the Joseph Ribkoff woman embracing her curves — wrapping her in confidence from day to night. Or, opt for a sense of understated chic with culotte and pull-on styles. Either way, she will command attention, adorned with shimmering rhinestones and intricate embroidery that transform the every day into the extraordinary.

Infused with timeless sophistication and an irresistible modern edge, these jeans have also been Made to be Better. As part of our ongoing efforts, sustainability is woven into our collection with eco-conscious Repreve®, an innovative fabric made from recycled plastic bottles, ensuring her style choices are as good for her as they are for the planet.

Joseph Ribkoff Jeans is ready to take her from AM to PM on a journey of comfort, style, and self-affirmation with every-wear.

THE DENIM FIT GUIDE



THE
BOOTCUT

P5

MID-RISE /
SLIM FIT /
BOOTCUT LEG



THE
WIDE

P7

HIGH-RISE /
CROPPED
WIDE LEG



THE
SLIM

P9

MID-RISE /
SLIM FROM THE
HIPS DOWN



THE
STRAIGHT

P15

MID-RISE /
STRAIGHT FROM THE
HIPS DOWN



THE
FLARE

P21

MID-RISE /
FLARED LEG



THE
CULOTTE

P23

MID-RISE /
WIDE LEG

J E A N S

INTRODUCING...

Brooke, Goldie and Gia — the newest stars to our denim lineup.

Whether paired with heels for a polished office look or styled casually with her favorite pair of white sneakers, each style embodies luxury and versatility.

CLASSIC BOOTCUT

Brooke

Brooke, the classic bootcut, lends a sophisticated flair with its flattering shape designed to elongate the legs.



WIDE LEG

Goldie

Goldie, the stylish wide-leg offers a relaxed yet refined aesthetic that exudes confidence.



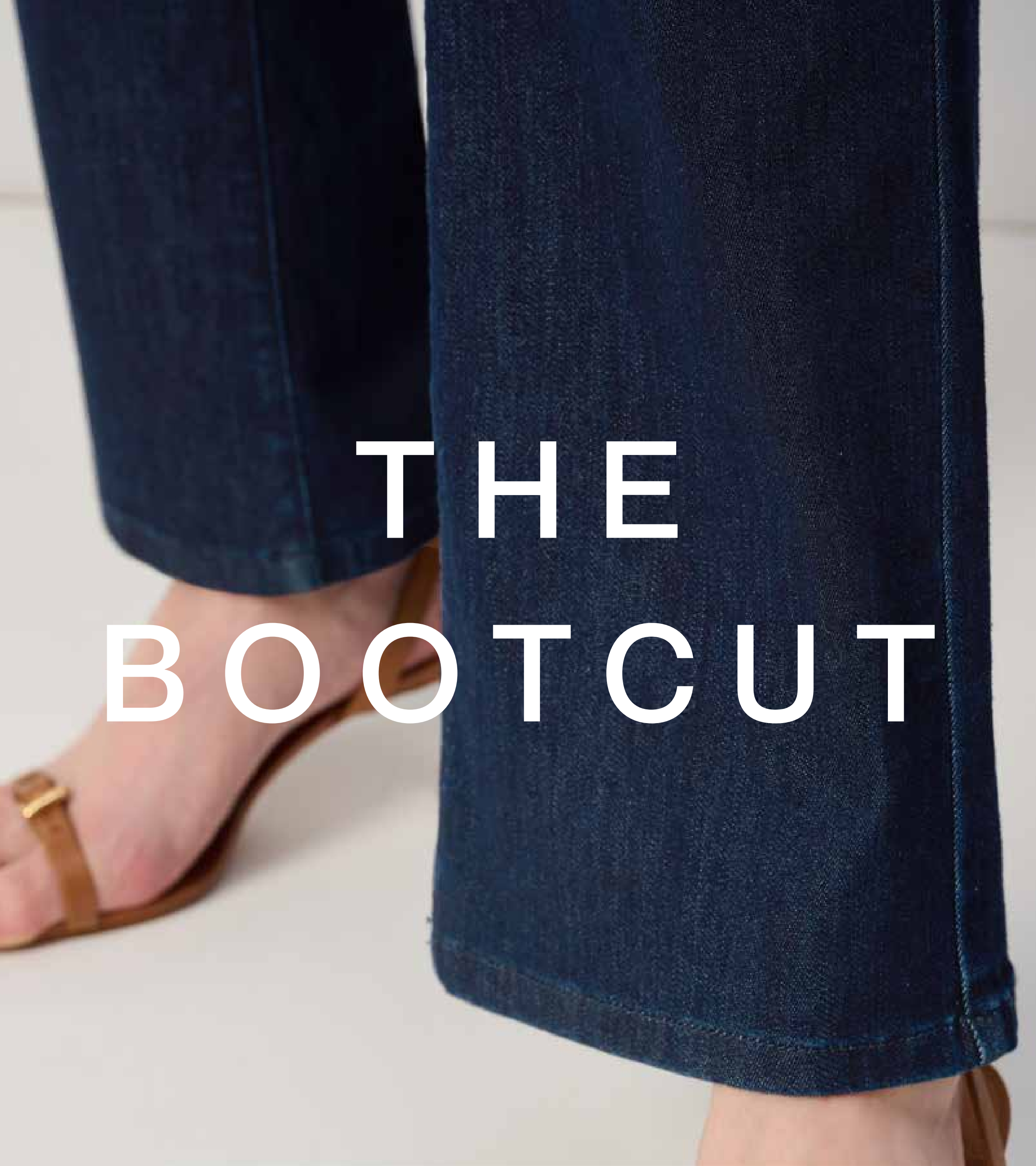
CLASSIC SLIM

Gia

Gia, a classic slim cut, contours every silhouette with a sleek elegance.

Crafted with Joseph Ribkoff **FEATHERWEAVE**, these jeans are made from a lightweight modal blend, super soft-to-touch stretch fabric. These standout styles redefine comfort with fashion, moving with her effortlessly throughout the day, making every moment a celebration of style and ease.

THE BOOTCUT



Joseph Ribkoff
JEANS



251967

**THE
BOOTCUT**

Brooke

Classic Bootcut Stretch Jeans

A must-have closet staple, the BROOKE bootcut denim pants are the perfect pair to dress up or down for all kinds of occasions. With a classic five-pocket style and lightweight modal blend, super-soft, Joseph Ribkoff FEATHERWEAVE denim, these fab jeans fit for a star pair just as well with a flowy blouse and heels, as with ankle boots and a graphic tee. The combinations are endless.

- 3302
DARK DENIM BLUE
- 3699
DARK MEDIUM BLUE

INSEAM: 32.5"
SIZES: 2 - 22
Featherweave®

MID-RISE /
SLIM FIT /
BOOTCUT LEG



THE WIDE



Joseph Ribkoff
JEANS



251968

THE WIDE

Goldie

Classic Wide-Leg Stretch Jeans

The GOLDIE classic wide-leg denim pants are anything but low-key. Crafted from a lightweight modal blend, super soft, stretchy Joseph Ribkoff FEATHERWEAVE denim, that hugs your curves in all the right ways, you'll be owning this iconic 70's starlet style as well as relishing their perfect comfort.

- 3302 DARK DENIM BLUE
- 3699 DARK MEDIUM BLUE

INSEAM: 32.5"
SIZES: 2 - 22
Featherweave®

HIGH-RISE /
CROPPED
WIDE LEG

THE SLIM





251966

THE SLIM

Gia

Classic Slim Fit Stretch Jeans

There's a reason why the GIA classic slim fit denim pants never go out of style and will make you feel like a super model. They're crafted from a lightweight modal blend, super soft, stretchy Joseph Ribkoff FEATHERWEAVE denim, that perfectly hugs your curves. Plus, you can style them in a million different ways.

- 3302 DARK DENIM BLUE
- 3699 DARK MEDIUM BLUE

INSEAM: 29"
SIZES: 2 - 22
Featherweave®

MID-RISE /
SLIM FROM THE
HIPS DOWN




213942S25

THE SLIM

Slim Fit Cropped Jeans With Rolled Hem

The extraordinary thing about this pair of denim jeans is that you can dress it up or down depending on your mood. If you're feeling a little "rock n' roll", throw on a faux leather jacket and slip into some stilettos. Feeling laid-back on a Sunday afternoon? Wear this pair of jeans with your favourite cozy sweater. No matter the mood, you can be sure to feel amazing in this cropped jean with rolled hems.

 <p>3699 DARK MEDIUM BLUE</p>	<p>INSEAM: 27" SIZES: 2 - 22</p>	<p>MID-RISE / SLIM FROM THE HIPS DOWN</p>
--	--------------------------------------	---



251960

**THE
SLIM**

Slim Fit Cropped Jeans

Embellished by a turned bottom hem with a shimmering rhinestone trim, these slim fit cropped denim pants will elevate any everyday outfit. It's a 10/10 for this classic five-pocket style, crafted from the highest quality lightweight stretch denim fabric.

12
WHITE

INSEAM: 27"
SIZES: 2 - 22

MID-RISE /
SLIM FROM THE
HIPS DOWN



251961

**THE
SLIM**

Slim Fit Cropped Jeans

Embellished by a turned bottom hem with a shimmering rhinestone trim, these slim fit cropped denim pants will elevate any everyday outfit. It's a 10/10 for this classic five-pocket style, crafted from the highest quality stretch denim fabric.

3302
DARK DENIM BLUE

INSEAM: 27"
SIZES: 2 - 22
Repreve®

MID-RISE /
SLIM FROM THE
HIPS DOWN



251959

THE SLIM

Slim Fit Pull-On Jeans

With a classic slim fit and an easy pull-on style, these denim pants are already a sure thing. Enhance them with elegant embroidery and delicate pearls at the hem and you've got yourself an irresistible look.

- 47 LIGHT BLUE DENIM
- 3699 DARK MEDIUM BLUE

INSEAM: 28.5"
SIZES: SZ 2 - 22
Repreve®

MID-RISE /
SLIM FROM THE
HIPS DOWN



THE STRAIGHT





251965

**THE
STRAIGHT**

Straight Fit Cropped Jeans

These straight fit denim pants gain extra style points with delicate embroidery at the hem. Their cropped length make them ideal for casual outings on spring and summer days.

12
WHITE

INSEAM: 27"
SIZES: SZ2 - 22
Repreve®

MID-RISE /
STRAIGHT FROM THE
HIPS DOWN



251956

**THE
STRAIGHT**

Straight Fit Crop Stretch Jeans

These straight fit cropped denim pants are distinguished by a lovely embroidery trim and glittering crystals. Crafted from ultra comfy stretch denim in a five-pocket style, these resplendent jeans will take your casual outfit up a notch (or two).

593
VINTAGE BLUE

INSEAM: 27"
SIZES: 2 - 22
Repreve®

MID-RISE /
STRAIGHT FROM THE
HIPS DOWN



251931

**THE
STRAIGHT**

Classic Straight-Leg Repreve Jeans

These classic straight leg denim pants are not your ordinary jeans. Feminine detailing at the bottom leg as well as a frayed hem create an original look that will elevate any casual outfit. Not to mention the soft stretch denim that make them irresistibly comfortable.

54
INDIGO

INSEAM: 28"
SIZES: SZ2 - 22
Repreve®

MID-RISE /
STRAIGHT FROM THE
HIPS DOWN



243964S25

THE STRAIGHT

Classic Straight - Leg Jeans With Frayed Hem

These classic straight leg denim pants are not your ordinary jeans. Feminine detailing at the bottom leg as well as a frayed hem create an original look that will elevate any casual outfit. Not to mention the soft stretch denim that make them irresistibly comfortable.

- 3854 MOONSTONE
- 4356 GERANIUM

INSEAM: 28"
SIZES: 2 - 22
Repreve®

MID-RISE /
STRAIGHT FROM THE
HIPS DOWN



2 4 3 9 6 4 S 2 5

THE STRAIGHT

Classic Straight - Leg Jeans With Frayed Hem

These classic straight leg denim pants are not your ordinary jeans. Feminine detailing at the bottom leg as well as a frayed hem create an original look that will elevate any casual outfit. Not to mention the soft stretch denim that make them irresistibly comfortable.

- 3854 MOONSTONE
- 4356 GERANIUM

INSEAM: 28"
SIZES: 2 - 22
Repreve®

MID-RISE /
STRAIGHT FROM THE
HIPS DOWN



THE FLARE



Joseph Ribkoff
JEANS



251957

**THE
FLARE**

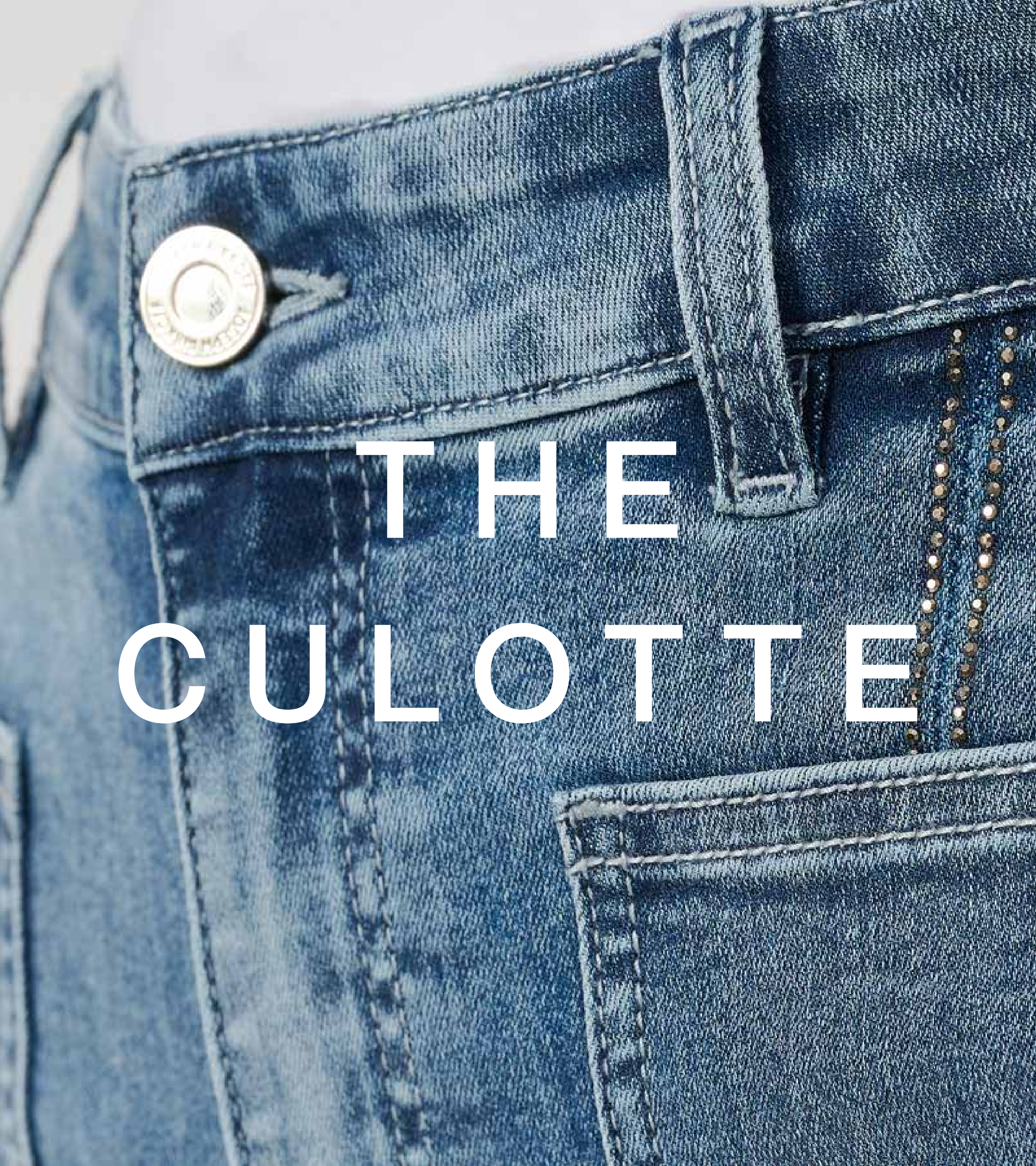
Flare Crop Stretch Jeans

A spring and summer essential, these cropped denim jeans feature a retro flared leg that's all the rage. Crafted from a soft and stretchy denim fabric in that classic 5-pocket design we know and love, this pair gains an edgy style with a raw cuff and frayed hem.

593
VINTAGE BLUE

INSEAM: 27"
SIZES: 2 - 22
Repreve®

MID-RISE /
FLARED LEG



THE CULOTTE



Joseph Ribkoff
JEANS



241903S25

THE CULOTTE

Culotte Jeans With Embellished Front Seam

Revamp your wardrobe with these gorgeous culotte jeans. These stylish jeans feature four practical pockets and an embellished front seam that screams sophistication. The slit and frayed hem add a trendy edge to the design, making these pants an absolute must-have.

- 593 VINTAGE BLUE
- 3302 DARK DENIM BLUE

INSEAM: 25"
SIZES: 2 - 22
Repreve®

MID-RISE /
WIDE LEG



241903S25

THE CULOTTE

Culotte Jeans With Embellished Front Seam

Revamp your wardrobe with these gorgeous culotte jeans. These stylish jeans feature four practical pockets and an embellished front seam that screams sophistication. The slit and frayed hem add a trendy edge to the design, making these pants an absolute must-have.

- 593 VINTAGE BLUE
- 3302 DARK DENIM BLUE

INSEAM: 25"
SIZES: 2 - 22
Repreve®

MID-RISE /
WIDE LEG



251901

**THE
CULOTTE**

Culotte Jeans With Embellished Front Seam

Revamp your wardrobe with these gorgeous culotte jeans. These stylish jeans feature four practical pockets and an embellished front seam that screams sophistication. The slit and frayed hem add a trendy edge to the design, making these pants an absolute must-have.

- 12
WHITE
- 3854
MOONSTONE

INSEAM: 25"
SIZES: SZ 2 - 22
Repreve®

MID-RISE /
WIDE LEG



251901

THE CULOTTE

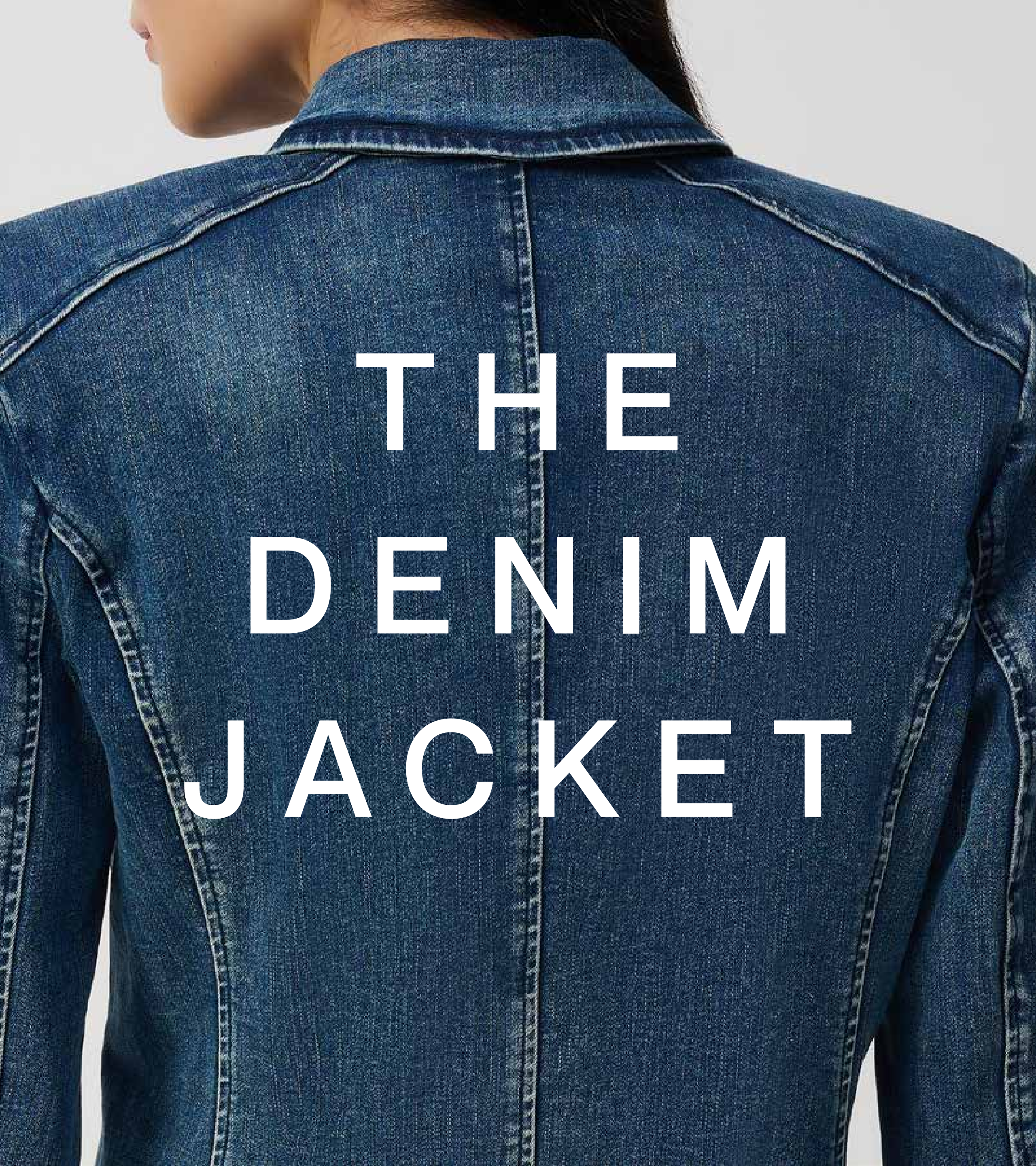
Culotte Jeans With Embellished Front Seam

Revamp your wardrobe with these gorgeous culotte jeans. These stylish jeans feature four practical pockets and an embellished front seam that screams sophistication. The slit and frayed hem add a trendy edge to the design, making these pants an absolute must-have.

- 12 WHITE
- 3854 MOONSTONE

INSEAM: 25"
SIZES: SZ 2 - 22
Repreve®

MID-RISE /
WIDE LEG



THE
DENIM
JACKET



Joseph Ribkoff
JEANS



251953

**THE
DENIM
JACKET**

Stretch Denim Jacket with Embroidery

This delightful stretch denim jacket is the perfect accoutrement to your dresses and skirts. Embellished with embroidered trim and sparkling rhinestones, this charming top layer radiates a style that's simple and sweet.

593
VINTAGE BLUE

20-1/2" CB
SIZES: XS - XXL
Repreve®



241914S25

**THE
DENIM
JACKET**

Fitted Denim Jacket With Allover Rhinestones

Elevate your denim game with this fitted jacket adorned with sparkling silver rhinestones. The classic shirt collar and cuffed long sleeves exude sophistication, while the shiny nickel buttons and two patch pockets with flaps provide both style and functionality.

156
LIGHT BLUE

22-1/4"
SIZES: XS - XXL
Repreve®



251962

THE DENIM JACKET

Stretch Denim Double-Breasted Blazer

Cut from a stretch denim fabric, this double-breasted blazer offers an unexpected blend of structure and casual style that's next level. Designed with a classic lapel collar, faux-pocket flaps, and military-inspired buttons, you're sure to feel relaxed yet confidently put together.

3699 DARK MEDIUM BLUE

24" CB
SIZES: XS - XXL
Repreve®



251964

**THE
DENIM
JACKET**

Stretch Denim Peplum Jacket

Adorable yet sophisticated, this stretch denim peplum jacket makes a fun addition to your casual wardrobe. The feminine peplum hem brings a touch of playfulness, while the embroidery gives it an air of elegance.

12
WHITE

23" CB
SIZES: XS - XXL
Repreve®

THE DENIM SKIRT





251952

**THE
DENIM
SKIRT**

Stretch Denim Trumpet Skirt

Displaying a vintage flair and a flirty flounce, this stretch denim trumpet skirt is the perfect blend of comfort and chic. A sophisticated alternative to your average jeans.

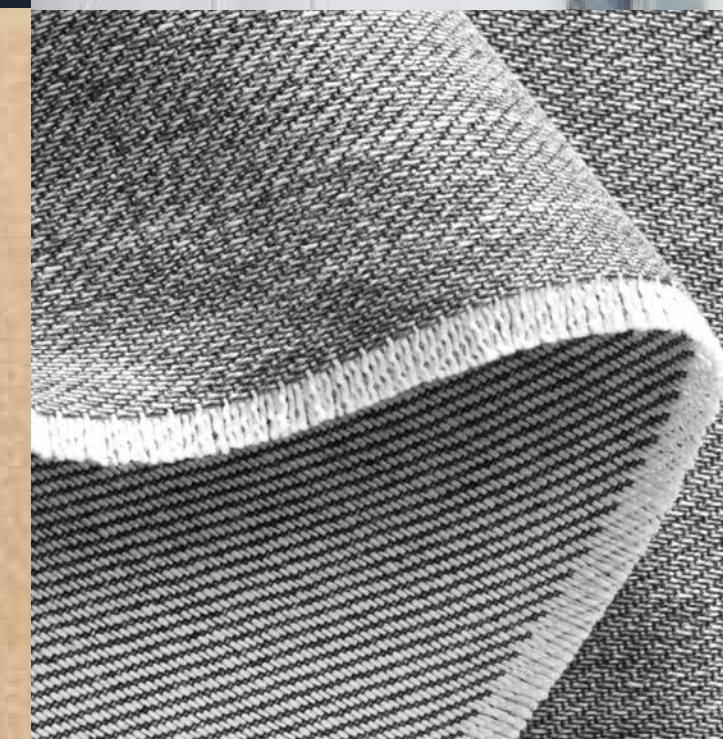
593
VINTAGE BLUE

INSEAM: 31"
SIZES: 2 - 22
Repreve®



MADE
TO BE
BETTER

REPREVE®



In our ongoing efforts to create greener fashion for a brighter future, we continue to weave sustainable fabrics into our denim collection.

Made to be better, our jeans are blended with **Repreve®**, an innovative polyester fabric made from recycled plastic bottles. This greener approach to denim ensures that environmental impacts have been significantly reduced. Make an eco-conscious fashion statement with confidence, comfort and style.

Find out more at repreve.com

Waist Circumference	IN	25	26	27	28	29	30 1/2	32	34	36	38	40	42
	CM	63.5	66	68.5	71	74	77	81	86	91	96.5	102	107
Hip Circumference	IN	35	36	37	38	39	40 1/2	42	44	46	48	50	52
	CM	89	91	94	96.5	99	103	107	112	117	122	127	132

**SIZE
CHARTS**

Pant,
Denim and
Skirt

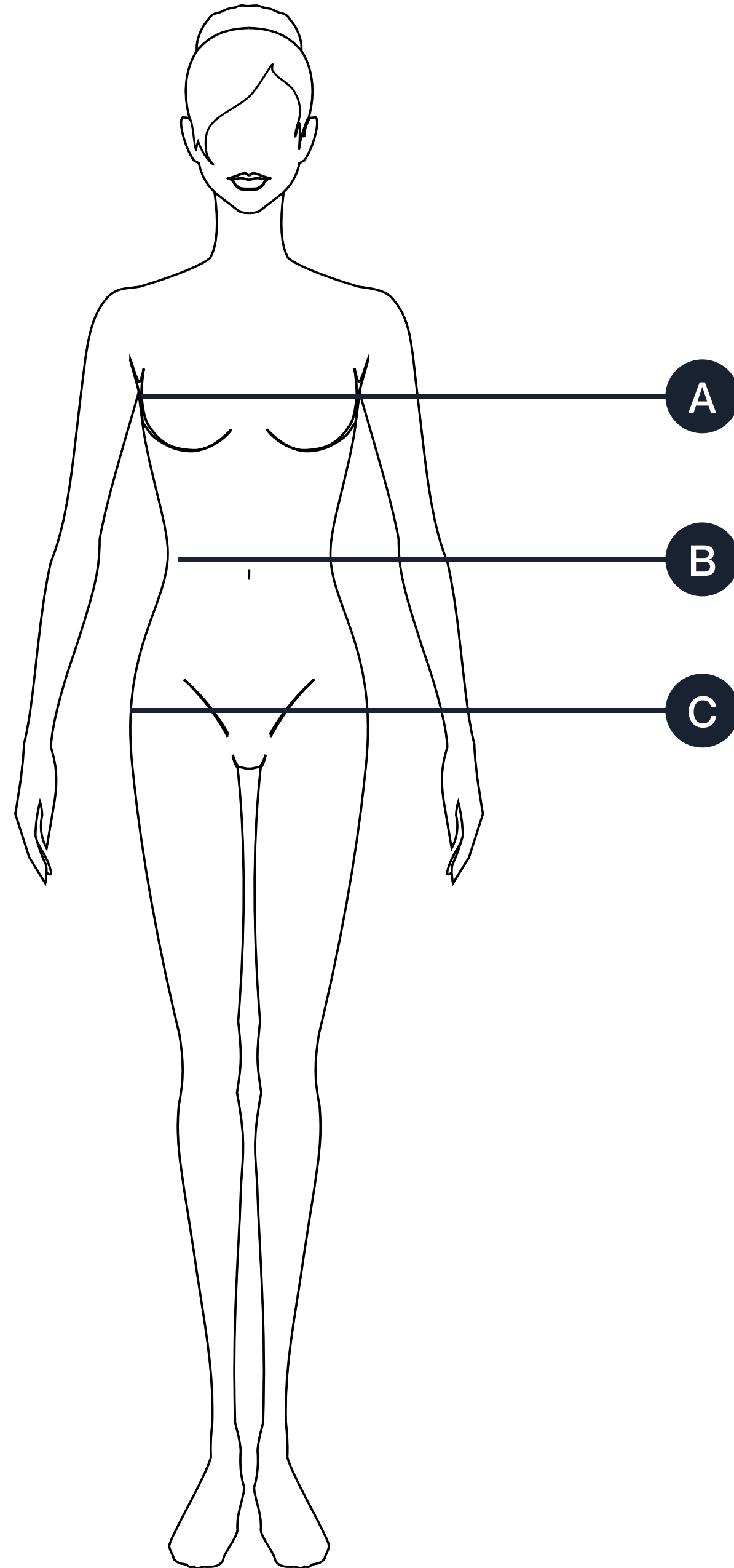
SIZES	XS		S		M		L		XL		XXL	
Can/US/Mex	0	2	4	6	8	10	12	14	16	18	20	22
UK	2	4	6	8	10	12	14	16	18	20	22	24
Germany	28	30	32	34	36	38	40	42	44	46	48	50
France	30	32	34	36	38	40	42	44	46	48	50	52
Spain	32	34	36	38	40	42	44	46	48	50	52	54
Italy	34	36	38	40	42	44	46	48	50	52	54	56
Japan	3	5	7	9	11	13	15	17	19	21	23	25

Bust Circumference	IN	32	33	34	35	36	37 1/2	39	41	43	45	47	49
	CM	81	84	86	89	91	95	99	104	109	114	119	124
Waist Circumference	IN	25	26	27	28	29	30 1/2	32	34	36	38	40	42
	CM	63.5	66	68.5	71	74	77	81	86	91	96.5	102	107
Hip Circumference	IN	35	36	37	38	39	40 1/2	42	44	46	48	50	52
	CM	89	91	94	96.5	99	103	107	112	117	122	127	132

**SIZE
CHARTS**

Top,
Jacket,
Coat,
Cover-up

SIZES	XS		S		M		L		XL		XXL	
Can/US/Mex	0	2	4	6	8	10	12	14	16	18	20	22
UK	2	4	6	8	10	12	14	16	18	20	22	24
Germany	28	30	32	34	36	38	40	42	44	46	48	50
France	30	32	34	36	38	40	42	44	46	48	50	52
Spain	32	34	36	38	40	42	44	46	48	50	52	54
Italy	34	36	38	40	42	44	46	48	50	52	54	56
Japan	3	5	7	9	11	13	15	17	19	21	23	25



A BUST MEASUREMENT

Measure under your arms, around the fullest part of your chest

B WAIST MEASUREMENT

Measure around your natural waistline, keeping the tape slightly loose

C HIP MEASUREMENT

Measure around your body at the fullest part of the lower hip, keeping the tape slightly loose

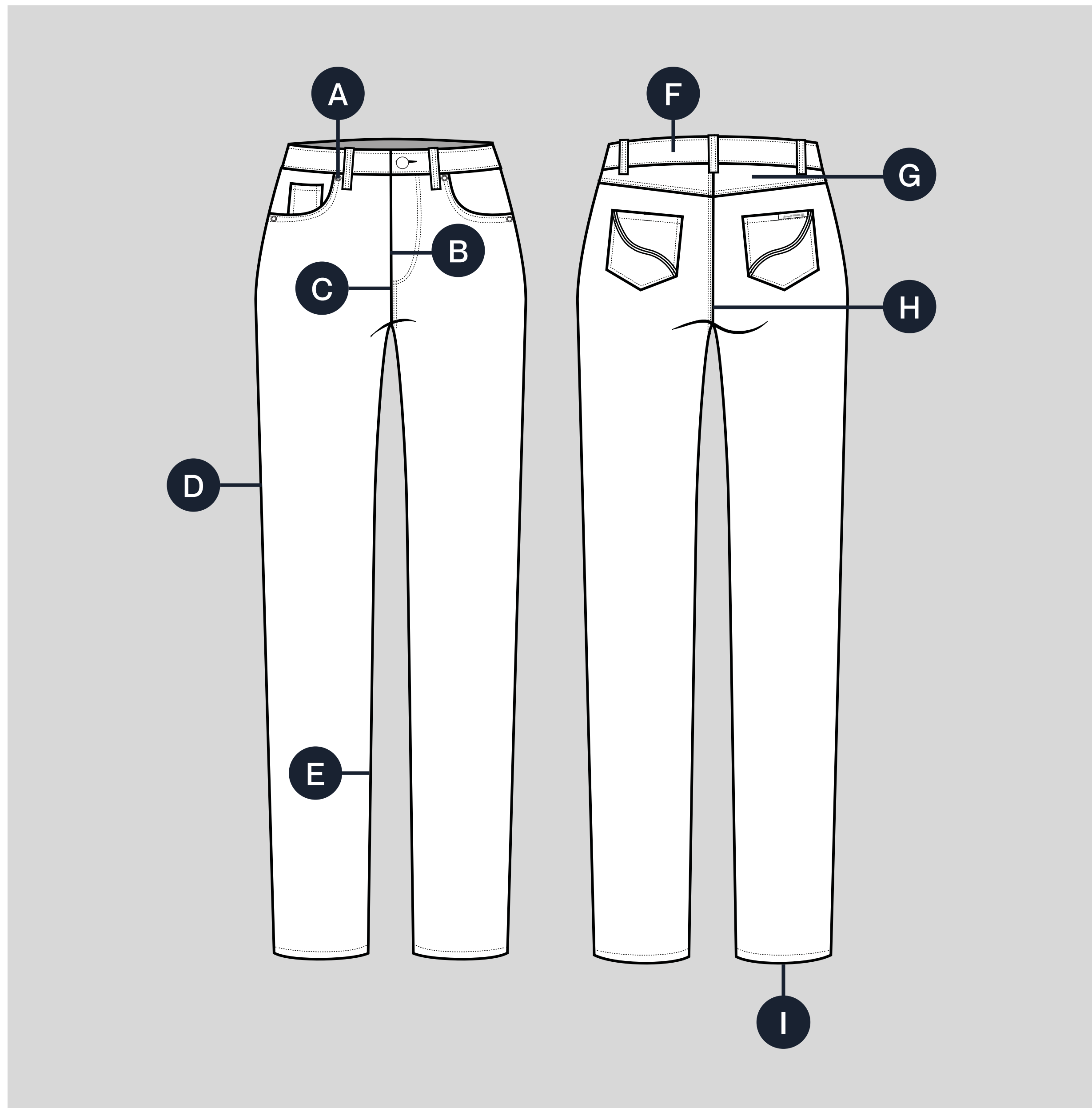
BODY MEASUREMENTS

MEASURING TIPS

- Use a flexible measuring tape
- Hold the tape firm and level, but not tight

PARTS
OF A
JEAN

- A** Rivets
- B** Fly
- C** Front Rise
- D** Outseam
- E** Inseam
- F** Waistband
- G** Back Yoke
- H** Back Rise
- I** Hem



DENIM GLOSSARY

Bartacks

The bar of closely-spaced stitches used to reinforce stress points in jeans.

Chain Stitch

The traditional stitch used to hem jeans, using one continuous thread that loops back on itself resembling links in a chain. An ideal mix of flexibility and strength, this thicker, smoother stitch is more authentic looking and, after a few washes, creates interesting fades around the ankle compared with a simpler lockstitch.

Coin Pocket

The smaller pocket, traditionally stacked inside the right front pocket.

Distressed

Jeans that have been broken in to give them a worn out or vintage appearance, from abrasion techniques including washing, sanding, and bleaching. Heavily distressed, or destructed jeans are torn, ripped, frayed at the hems and seams, and sometimes repaired.

Dyeing

A coloration procedure in which natural cotton yarns are dipped into indigo dye baths prior to the denim weaving process. After each bath, the yarns are hung to oxidize and activate the indigo, which changes hues from yellow to green to blue. The yarn is then rinsed of excess dye and dried.

Embroidery

Embroidery is a form of decorative stitching. Sometimes embroidery incorporates other materials, like beads or pearls, but any decorative stitching counts.

Finishing / Finishes

Textile finishes are processes such as bleaching, abrading, bio-polishing or desizing that improve the look, feel or performance of denim.

Frayed Hem

Frayed hems are usually destructed to the point of showing the white cotton warp strings of the denim.

Fade(s)

Lighter areas present in denim after repeated wash and wear. Fades present as familiar patterns with names like whiskers and honeycombs in the stress areas and hinges of the jeans, especially around the knee, hip, hem, and thigh. Abrasion techniques like sanding and shaving along with stone and enzyme washes can be used to produce fades artificially.

Fit

The way that a pair of jeans wears based on cut through the leg, the shape and length of the rise, and the design of the leg opening.

Hand

The feel of a specific denim, whether in your hand (literally) or against your skin while wearing. Some denim is smooth and thin, while others are thick and sturdy. In general and in the absence of starch or distressing, the heavier the weight and the newer the fabric, the stiffer the hand.

Hem

The bottom of a shirt, sleeve, or pant leg that has been folded and sewn to prevent unraveling. Most denim is hemmed with a chain stitch or lock stitch, whether by hand or machine.

Inseam

The measurement, usually in inches, of the length of the leg from the crotch to the bottom of the hem. The fabric along the inseam of a pair of jeans is usually double-felled, or folded and double stitched for strength and durability.

DENIM GLOSSARY

Indigo

The iconic color and source of the dye that makes denim blue.

Leg Opening

The opening at the bottom of a pair of jeans. The width will vary with style. Slim fit will taper in while boot cut will flare out. The measure of the leg opening will impact how a pair of jeans will cuff or stack above your footwear.

Patches

Patches are swatches of denim used to reinforce worn areas or behind holes. Patches can be decorative or they can be utilitarian and match the color and style of the jean.

Rise

The measure from the waistband to the bottom of the crotch seam. An important part of the fit of a pair of jeans, rise will dictate where on your hips they sit.

Rivets

Metal fasteners used to attach or reinforce two or more pieces of fabric. Comprised of a head and tail designed to be pressed together until permanently fused.

Stretch Denim

A cotton, or cotton blend, with a small amount of elastane, a stretchy, synthetic fiber, incorporated into the fabric.

Topstitching

Topstitching is a row of continuous stitches along the top or the right side of a pair of jeans. You'll see topstitching along the waistband or on outer seams of your pants.

Waistband

A waistband is a strip of cloth on clothing that encircles the waist. It's where you'll find belt loops and the top closure button on a pair of jeans.

Wash

The rinsing of denim to soften and remove excess dye. Repeated washing can produce, often desirable, shrinkage and fading.

Weight

The measure, in ounces, of a square yard of denim fabric after weaving. Denim weight correlates to heft and density. The heavier the fabric, the thicker the denim. Once washed, denim can feel lighter and softer.

Whiskers

A fade pattern characterized by horizontal, or slightly angled, lines on the front rise that begin at the fly and can stretch across the pockets to the outseam. This common pattern is the result of the folding and stretching of denim while seated. Abrasion techniques are often used to mimic this great natural look in modern distressed jeans.

Yoke

The V-shaped section at the back of jeans, above the pockets. The yoke allows for hip movement and comfort when seated. Based on fit, the cut can range from straight to a deeper V-shape with a greater the seat curve.



GLOBAL HEAD OFFICE
2375 rue de l'Aviation, Montréal, Québec, Canada, H9P 2X6
JOSEPHRIBKOFF.COM

CANADA & USA - 1 800 361 1839
AUSTRALIA - 03 9419 4999
BELGIUM AND LUXEMBURG - 32 927 98966
CROATIA, CZECH REPUBLIC, SLOVAKIA, SLOVENIA,
POLAND AND HUNGARY - 44 7584 493979
FRANCE - 33 179255663
GERMANY, AUSTRIA, AND SWITZERLAND - 49 02102 939020
IRELAND - 353 1429 5353
ITALY - 39 0543 725862
MEXICO, COLOMBIA, AND CHILE - 52 442 161 0171
NETHERLANDS - 31 20 4080205
NEW ZEALAND - 09 623 0888
NORWAY, SWEDEN, DENMARK, AND FINLAND - 46 766 777 407
SPAIN, PORTUGAL, AND CANARY ISLANDS - 931 315 316
THE UNITED KINGDOM - 01392 876390

Joseph Ribkoff
J E A N S